

Product availability : Stock - Normally stocked in distribution facility



Price** : 1,707.00 USD



Main

Product	Single Throw Safety Switch
Current Rating	200 A
Certifications	UL listed file E2875
Enclosure Rating	NEMA 1 steel
Factory Installed Neutral	None
Disconnect Type	Fusible disconnect
Short Circuit Current Rating	10 kA H or K 200 kA R, J or L
Mounting Type	Surface
Number of Poles	3
Electrical Connection	Lugs
Duty Rating	Heavy duty
Voltage Rating	600 V AC/DC
Wire Size	AWG 6...250 kcmil copper or aluminium

Complementary

Width	469.90 mm (18.5 in)
Height	736.60 mm (29 in)
Depth	209.55 mm (8.25 in)
Tightening torque	31.07 N.m (275 lbf.in) 0.02...0.20 in ² (13.3...127 mm ²) AWG 6...250 kcmil

Ordering and shipping details

Category	00008 - H&HU SW,2&3P,N1,30-200A
Discount Schedule	DE1
GTIN	00785901482314
Package weight(Lbs)	20.32 kg (44.8 lb(US))
Returnability	Yes

Country of origin	US
-------------------	----

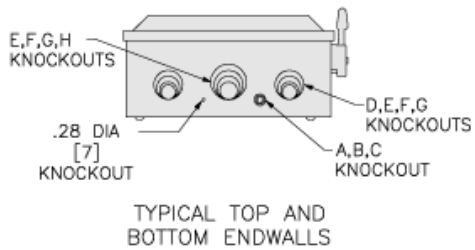
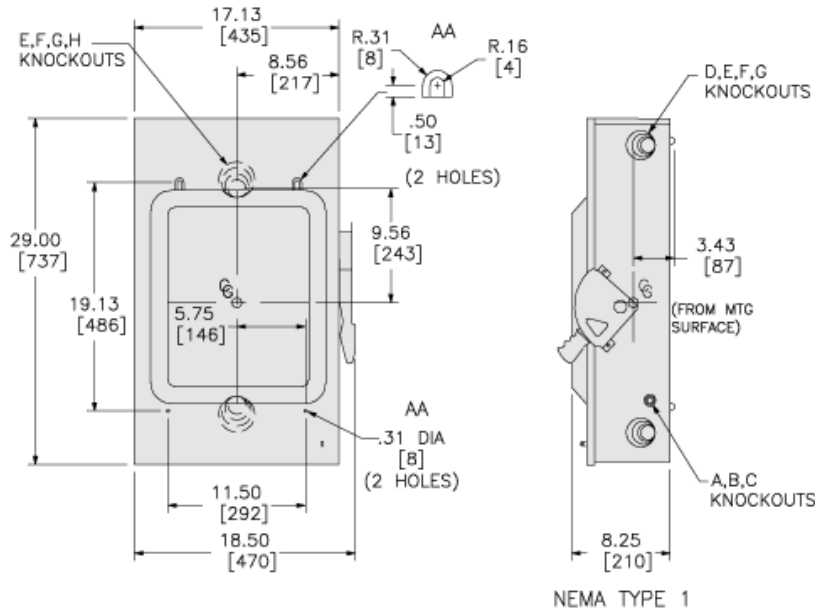
Offer Sustainability

Sustainable offer status	Green Premium product
California proposition 65	WARNING: This product can expose you to chemicals including: Lead and lead compounds which is known to the State of California to cause Carcinogen & Reproductive harm. For more information go to www.p65warnings.ca.gov
REACH Regulation	REACH Declaration
REACH free of SVHC	Yes
EU RoHS Directive	Compliant EU RoHS Declaration
Toxic heavy metal free	Yes
Mercury free	Yes
RoHS exemption information	Yes
China RoHS Regulation	China RoHS declaration Pro-active China RoHS declaration (out of China RoHS legal scope)
Environmental Disclosure	Product Environmental Profile
Circularity Profile	No need of specific recycling operations
WEEE	The product must be disposed on European Union markets following specific waste collection and never end up in rubbish bins.

Contractual warranty

Warranty	18 months
----------	-----------

Approximate Dimensions



SYMBOL	KNOCKOUTS			
	CONDUIT SIZE		DIAMETER	
	IN	MM	IN	MM
A	.50	13	.88	22
B	.75	19	1.13	29
C	1.00	25	1.38	35
D	1.25	32	1.75	45
E	1.50	38	2.00	51
F	2.00	51	2.50	64
G	2.50	64	3.00	76
H	3.00	76	3.50	89